

SYNCHRONIZED INGROUND TELESCOPIC JACK - 3 STAGES



CUSTOMER'S INFORMATION:

COMPANY NAME : _____

TEL : _____

DATE : _____

EMAIL : _____

PROJECT/REFERENCE : _____

JACK DATA :

Capacity (Pound) : _____ Car Weight (Pound) : _____

Speed (Ft/Min) : _____ Travel (In) : _____

Twin Single New
 Vic NPT Male NPT Female

Existing :

Ø PISTON (A) _____

Rupture Valve : Yes No

Ø CASING (E) _____

NPT VIC

Ø OIL INLET _____

Buffer & Springs : Yes No

Ø GPM _____

New Pit Channel : Yes No

Static pressure (PSI) _____

Follower Guide

POWER UNIT DATA :

TYPE : DRY SUBMERSIBLE

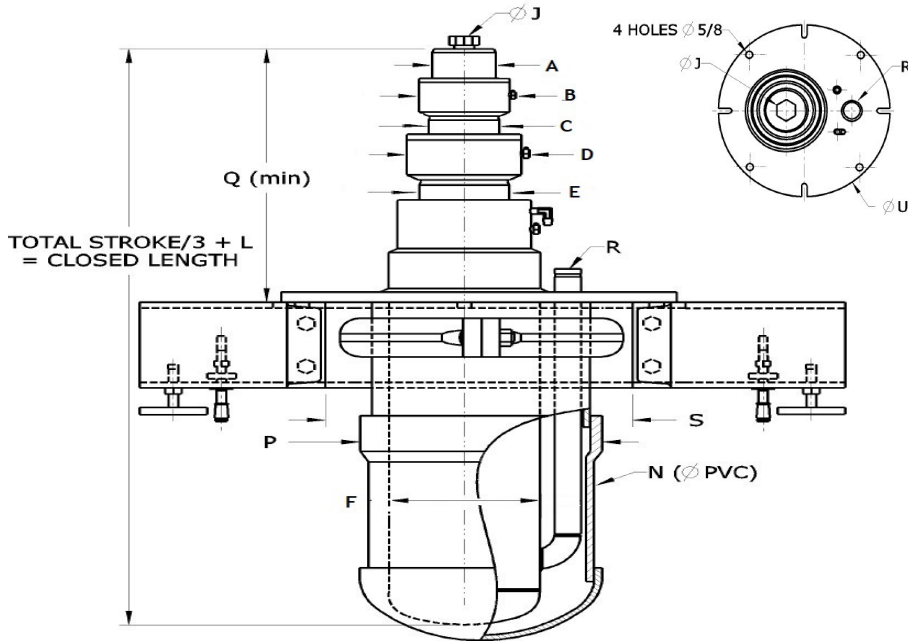
START : 80 120

MOTOR VOLTAGE : 220/1/60 208/3/60 230/3/60
 460/3/60 575/3/60 OTHER : _____

OPTIONAL ACCESSORIES DESIRED :

- Ball valve
- Thermal block
- Pressure negative switch
- Insulating coupling
- Line strainer
- Oil heater
- Oil cooler
- Thermistor
- Drip pan
- Scavenger pump
- Temperature regulator
- Controller mount
- Anti-vibration pad

OTHER : _____



A	B	C	D	E	F	J	L	N	P	Q	R	S	U
Ø PISTON	Ø HEAD	Ø PISTON	Ø HEAD	Ø PISTON	Ø CASING	Ø BOLT	DEAD LEN- GHT (IN)	Ø PVC	Ø PVC RING	SUPPORT POSITION	Ø OIL INLET	PIT CHANNEL OPENING	SUPPORT
1 1/2 SP	3	2	4	3	4 1/2	1/2 NC	26 1/2	8	7 1/4	18	1/2 NPT	15	18 3/4
1 3/4	4	2 3/4	5	3 3/4	5 1/2	3/4 NC	28	10	11 1/2	19	3/4 NPT	20	18 3/4
2	4	2 7/8	5 1/2	4 1/4	6	3/4 NC	29 1/2	12	13 5/8	19 3/4	3/4 NPT	20	23 3/4
2 SP	4 1/2	3 1/2	5 1/2	4 1/2	6 1/2	3/4 NC	29 1/2	12	13 5/8	19 3/4	3/4 NPT	20	23 3/4
2 1/2	5	3 3/4	6 1/2	5 3/8	7 1/2	1 NC	34	14	17	19 1/2	2 VIC	23	26 3/4
3	5	4	6 1/2	5 1/2	8	1 NC	35	14	17	19 1/2	2 VIC	23	26 3/4
3 1/2	6	4 7/8	7 1/2	6 3/4	10	1 1/4 NC	38	16	17	19 3/4	2 VIC	23	26 3/4
3 1/2 SP	6 1/2	5 1/2	8 1/2	7 1/2	11	1 1/4 NC	41	18	19 1/2	20 1/2	2 VIC	28	32
4 1/2	7	6	9 1/2	8	12	1 1/4 NC	44	20	20 1/4	21 1/2	2 VIC	28	32

STANDARD BOT AND TOT	0/25 FEET/MINS		26/50 FEET/MINS		51/75 FEET/MINS		76/100 FEET/MINS		101/125 FEET/MINS		126/150 FEET/MINS		151/200 FEET/MINS	
TELESCOPIC 3 STAGES	BOT	TOT	BOT	TOT	BOT	TOT	BOT	TOT	BOT	TOT	BOT	TOT	BOT	TOT
RECOMMENDED VALUE	6"	12"	8"	12"	10"	16"	10"	16"	10"	16"	10"	18"	12"	24"
MINIMUM VALUE	4"	8"	4"	8"	6"	10"	8"	12"	8"	12"	8"	12"	10"	16"

IMPORTANT :

BOT : _____ TOT : _____

NOTES